



Ecuador

#82

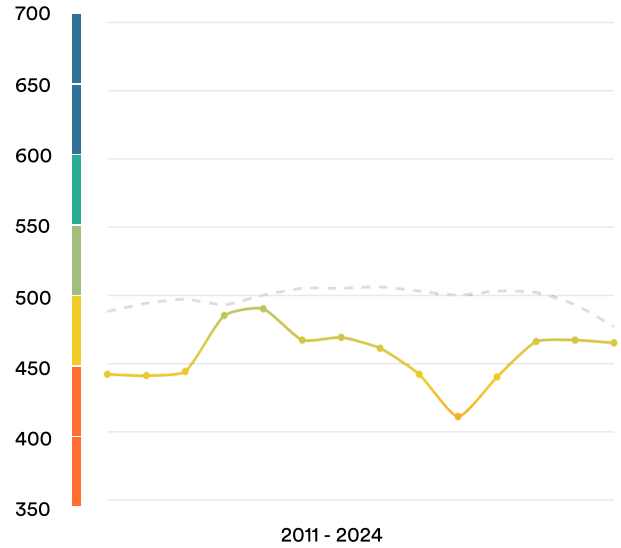
Ranked no. 82 out of 116 countries

EF EPI score: 465 -2 ▼

Global average score: 477

Position in Latin America: 19 of 21

Proficiency Trends



Key █ Very high █ High █ Moderate █ Low █ Very low

Geographic Scores

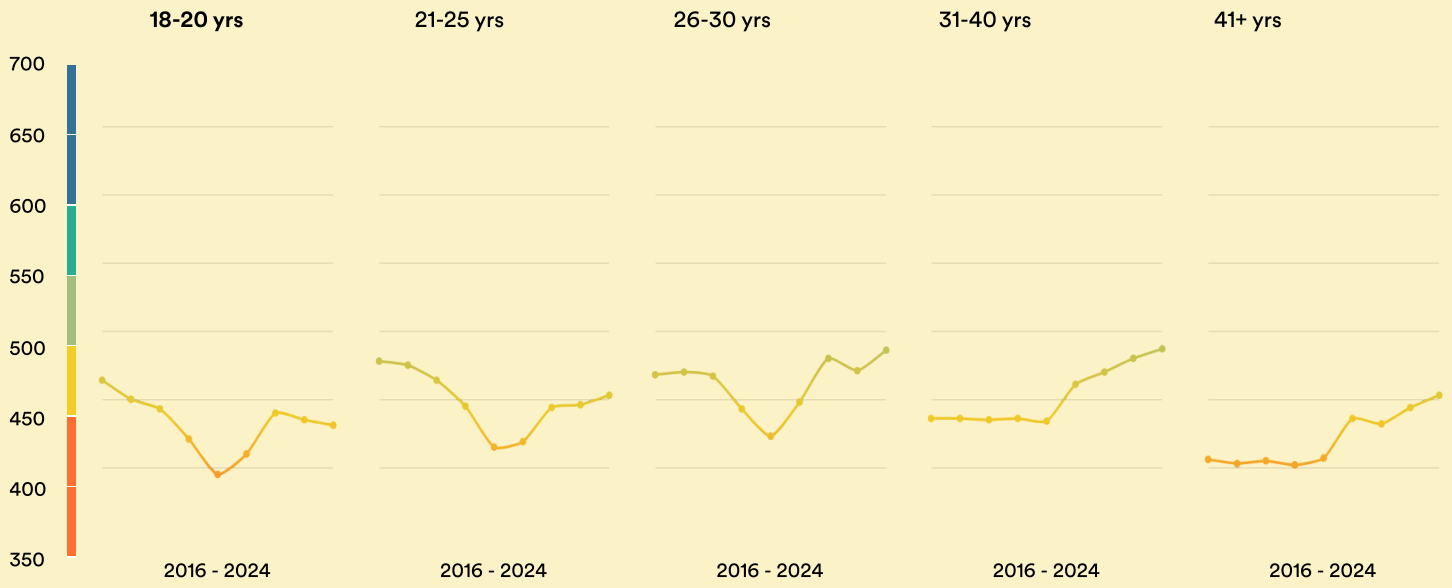
Regions

| | |
|--------------------------------|-----|
| Pichincha | 520 |
| Azuay | 478 |
| Guayas | 470 |
| Loja | 465 |
| Tungurahua | 460 |
| El Oro | 448 |
| Chimborazo | 430 |
| Imbabura | 418 |
| Santo Domingo de los Tsáchilas | 415 |
| Los Rios | 414 |
| Cáñar | 408 |
| Manabí | 405 |
| Santa Elena | 404 |
| Sucumbíos | 404 |
| Orellana | 400 |
| Cotopaxi | 383 |
| Napo | 350 |

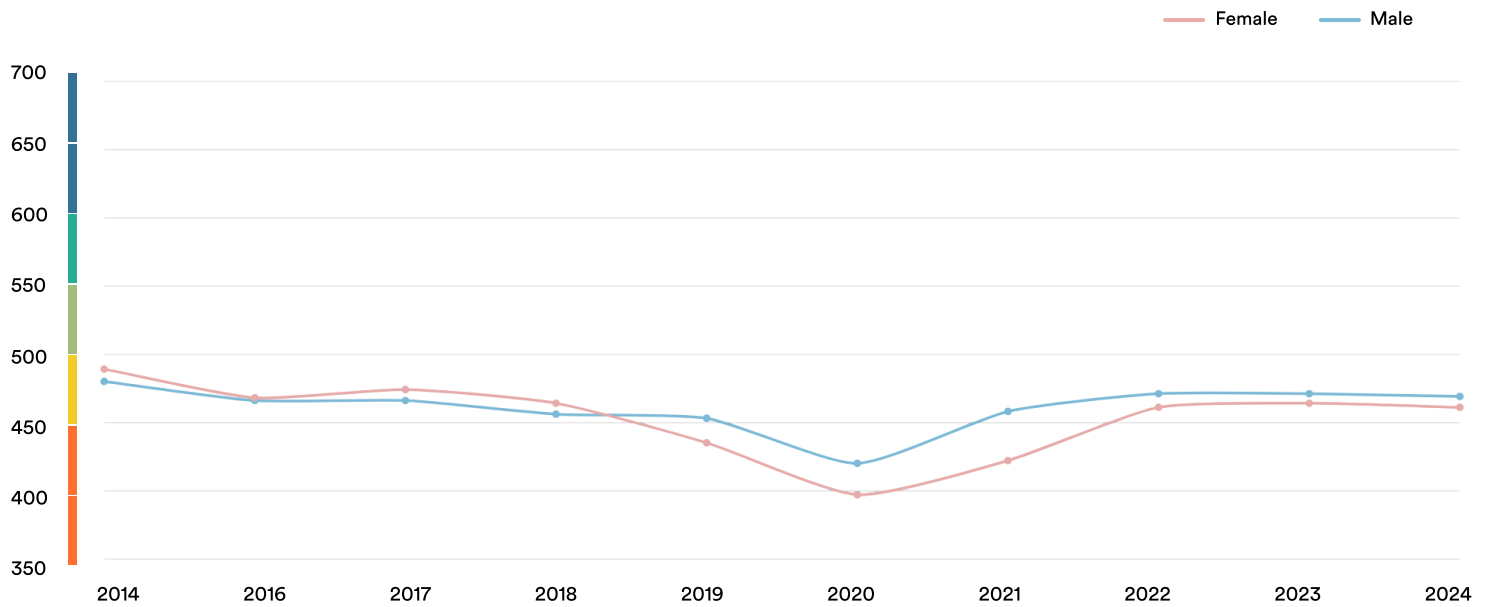
Cities

| | |
|---------------|-----|
| Quito | 521 |
| Cuenca | 480 |
| Ambato | 477 |
| Guayaquil | 476 |
| Loja | 453 |
| Riobamba | 447 |
| Ibarra | 420 |
| Manta | 408 |
| Santo Domingo | 392 |
| Latacunga | 387 |

Age Trends



Gender Trends



About EF EPI

The EF English Proficiency Index (EF EPI) is a ranking of countries and regions by their English skills. This regional fact sheet is a companion to the EF EPI 2024 edition report. To read the full EF EPI report, with the ranking, regional analyses, and demographic trends, visit www.ef.com/epi.

(<https://www.ef.com/epi>) The EF EPI is published by Signum International AG.

© Signum International AG 2024. All rights reserved.

